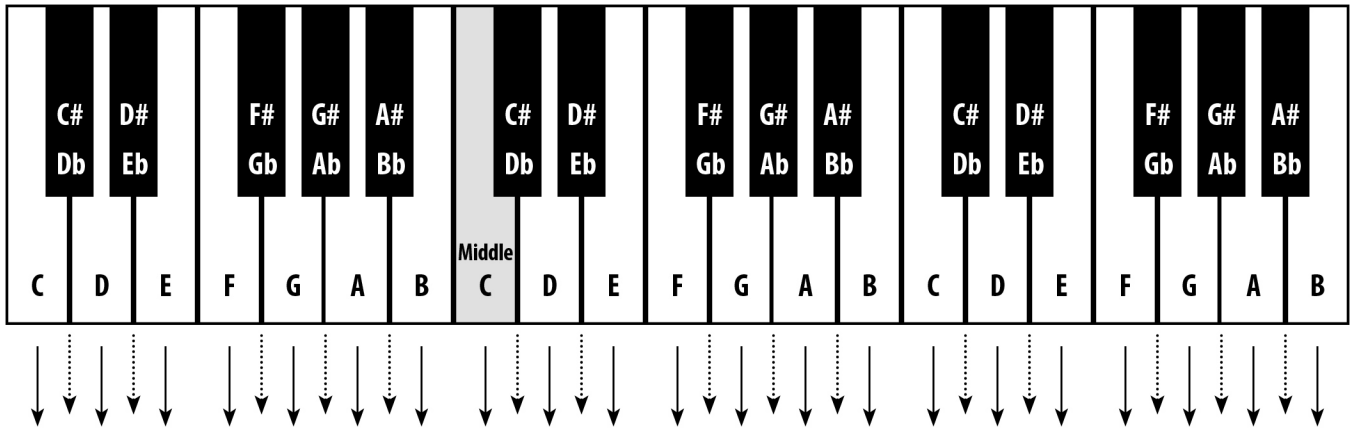


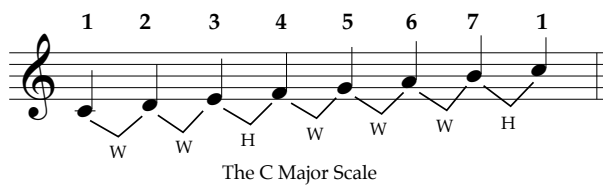
# Music Theory Quickstart

## Reading Treble Clef Notes



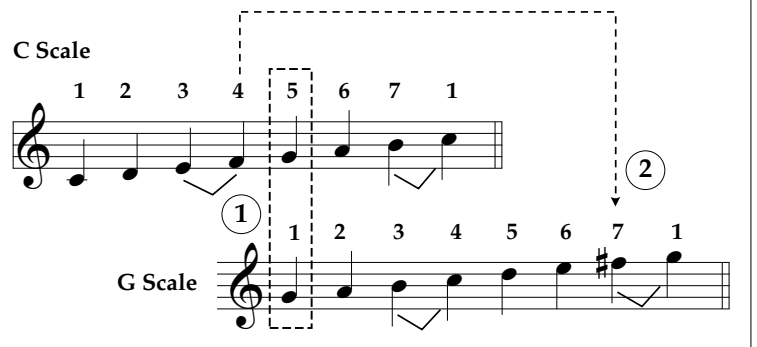
## Major Scale Basics—The 15 Major Scales

### Major Scale Definition—Whole and Half Steps



Generate the next scale in the series by doing the following:

1. Start the next scale on the 5th degree of previous scale.
2. Raise degree 4 of previous scale one half step (see below).



### Key of Cb—7 flats



### Key of Gb—6 flats



### Key of Db—5 flats



